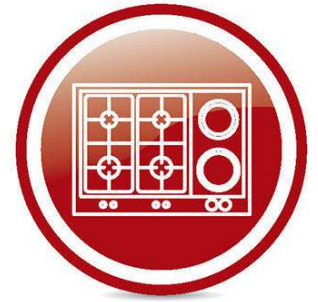




Spare parts for:

Cooking equipment



Suitable for:

FIMAR



This catalogue is automatically generated.
Therefore, the sequence of the items might
not be always shown at best.

Updates will be issued in case of additions
and/or amendments.

Suitable universal spare parts may not be included





Suitable for:

FIMAR



Suitable for:

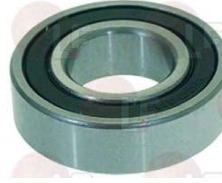
Bearings

3063116 BEARING 6001 2RS
external \varnothing 28 mm-internal \varnothing 12 mm-thickness 8 mm



FIMAR SL2189

9063012 BEARING 6004 DDU
external \varnothing 42 mm -internal \varnothing 20 mm-thickness 12 mm



FIMAR SL0223

FIMAR SL1799

9063007 BEARING 6005 2RS
external \varnothing 47 mm-internal \varnothing 25 mm-thickness 12 mm
for OEM KNEADER F201/1-VE201/2
for FIMAR KNEADER IM25-IM38
for FIMAR PLANETARY IP10-IP20
for SIRMAN BONE BAND SAW SO3100



FIMAR SL0081

FIMAR SL0241

3063005 BEARING 6202 2RS NSK
external \varnothing 35 mm -internal \varnothing 15 mm-thickness 11 mm



FIMAR CO0714
FIMAR SL2472

FIMAR CO3204

FIMAR SL0323

3063017 BEARING 6203 2RS NSK
external \varnothing 40 mm -internal \varnothing 17 mm-thickness 12 mm

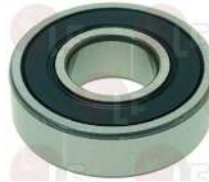


FIMAR CO2106

FIMAR SL0015

FIMAR SL0131

3063121 BEARING 6203 2RS SKF
 \varnothing ext. 40 mm - \varnothing int. 17 mm - thickness 12 mm



FIMAR CO2106

FIMAR SL0015

FIMAR SL0131

1063906 BEARING 6203 2Z
external \varnothing 40 mm-internal \varnothing 17 mm-thickness 12 mm



FIMAR SL0126

1063901 BEARING 6204 2RS NSK
external \varnothing 47 mm -internal \varnothing 20 mm-thickness 14 mm



FIMAR SL2592

3063122 BEARING 6204 2RS SKF
 \varnothing ext. 47 mm - \varnothing int. 20 mm - thickness 14 mm



FIMAR SL2592



Suitable for:

FIMAR



Suitable for:

Burners, flame spreaders and accessories

3025364 BURNER BOWL \varnothing 78 mm

for Crêpe pan gas (FIMAR) CR400G1 - CR400G2
for Pot stove electric (TECNOINOX) PC35G
for Pot stove gas (BERTO'S) - Series 600
Series 700 - Series 900
for Pot stove gas (TECNOINOX) PC70G



FIMAR CO2267

3025363 FLAME SPREADER \varnothing 120 mm

for Crêpe pan gas (FIMAR) CR400G1 - CR400G2
for Pot stove electric (TECNOINOX) PC35G
for Pot stove gas (BERTO'S) - Series 600
Series 700 - Series 900
for Pot stove gas (TECNOINOX) PC70G



FIMAR CO2264

3025364 BURNER BOWL \varnothing 78 mm

for Crêpe pan gas (FIMAR) CR400G1 - CR400G2
for Pot stove electric (TECNOINOX) PC35G
for Pot stove gas (BERTO'S) - Series 600
Series 700 - Series 900
for Pot stove gas (TECNOINOX) PC70G



FIMAR CO2267

3025362 FLAME SPREADER ASSY. \varnothing 120 mm

for Crêpe pan gas (FIMAR) CR400G1 - CR400G2
for Pot stove electric (TECNOINOX) PC35G
for Pot stove gas (TECNOINOX) PC70G



FIMAR CO2265

3025362 FLAME SPREADER ASSY. \varnothing 120 mm

for Crêpe pan gas (FIMAR) CR400G1 - CR400G2
for Pot stove electric (TECNOINOX) PC35G
for Pot stove gas (TECNOINOX) PC70G



FIMAR CO2265



Suitable for:

FIMAR



Suitable for:

Cables for piezo igniters

5017499 IGNITION CABLE 900 mm
with faston 3x0.8 for ignition
with faston \varnothing 2.4 for plug
for ALPHA-DELTA-GAMMA-BIFRONTE



FIMAR CO3130

Capacitors

3068016 CAPACITOR μ F 10 450V 50/60Hz
operating temperature $-25+85^{\circ}\text{C}$
in compliance with EEC 93/68 and 92/31 regulations



FIMAR CO1442

3068019 CAPACITOR μ F 12.5 450V 50/60Hz
operating temperature $-25+85^{\circ}\text{C}$
in compliance with EEC 93/68 and 92/31 regulations



FIMAR CE605272

FIMAR SL1421

3068008 CAPACITOR μ F 5 450V 50/60Hz
operating temperature $-25+85^{\circ}\text{C}$
in compliance with EEC 93/68 and EEC 92/31 regulat



FIMAR CO1478

Circlips

5015337 SEEGER RING FOR SHAFT
external \varnothing 22,5 mm - internal \varnothing 18,5 mm
thickness 1 mm



FIMAR SL0075

Contact thermostats

3443045 CONTACT THERMOSTAT 180°C 16A 250V
with manual reset - 16A 250V



FIMAR CO1942

Energy regulators

3350024 ENERGY ADJUSTER
contact capacity 240V 12A
max temperature 125°C
D-shaped pin ø 6x4.6 mm
double rotation direction
for Bain-marie electric (BERTO'S) E6BM3B - E6BM3M
E6BM6B - E6BM6M - SE9BM4M - SE9BM8M
for Grill electric (BERTO'S) E6PL60B - E6PL60M
E9PL40M - E9PL80M - PLE40BE - PLE40ME
PLE80BE - PLE80ME - SE9PL40M - SE9PL80M
for Salamander electric (BERTO'S) SA/E48 - SA/E60
SA/E60-E - SA/E68M - SA/E68M-E



FIMAR CO1953

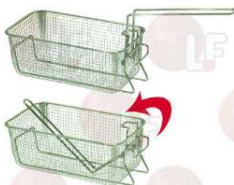
3350026 ENERGY ADJUSTER
contact capacity 230V 13A - max temperature 125°C
D-shaped pin ø 6x4.6 mm
double rotation direction
for PYROCERAM. TOPS-SALAMANDERS-POTATO WARMERS
for Boiling pan (MORICE)
for Boiling pan (THIRODE)
for Bratt pan (MORICE)
for Bratt pan (THIRODE)
for Fry top (LOTUS) - Series 60 - Series 65
Series 70
for Grill (THIRODE)
for Hot plate (EMMEPI) - Series 650 - Series 700
for Hot plate (GICO) - Series 110 - Series 700
Series 920
for Pasta cooker electric (BONNET)



FIMAR CO1953

Fryer baskets and accessories

3055326 FRYER BASKET 245x140x100 mm
folding handle
for Fryer electric (FIMAR) FT4 - FT4N - FT44
FT44N



FIMAR CO1126

3055327 FRYER BASKET 245x220x100 mm
folding handle
for Fryer electric (FIMAR) FT8 - FT8N - FT8RN
FT88 - SF9 - SF9N - SF99



FIMAR CO1127



Suitable for:

FIMAR



Suitable for:

Gas burners

3023156 BURNER \varnothing 25x545 mm
made of stainless steel
for Lava rock grill gas (FIMAR)
till 31/12/98
B115
B50 - B80



FIMAR CO3100

3023157 BURNER \varnothing 25x545 mm
made of stainless steel
for Lava rock grill gas (FIMAR)
since 1/01/99
B115



FIMAR CO3158

Gas taps and accessories

3348016 GAS COCK 21/SV
with pilot flame
fittings \varnothing M16x1.5mm
thermocouple connection M9x1 mm
D-shaped pin \varnothing 8x6.5 mm



FIMAR CO3139

3348076 GAS COCK 21/SV
with pilot flame
fittings \varnothing M16x1.5mm
thermocouple connection M8x1 mm
D-shaped pin \varnothing 8x6.5 mm
for Pot stove (ZANUSSI) - Series HD900



FIMAR CO3139

Gearmotors

3240340 MOTOR CROUZET 24V 3000RPM
D-shaped pin 7x8 mm - pin height 26 mm



FIMAR CO1680

Handles

3242336 OVEN DOOR HANDLE \varnothing 29x90 mm M10



FIMAR SL0106



Suitable for:

FIMAR

Suitable for:



Heating elements

3355309 HEATING ELEMENT 1000W 230V BOTTOM

length 185 mm - width 180 mm
complete with cables

for Panini grill electric (BERTO'S) PD/VTR
PDL/LD - PDL/ST - PDL/SX - PDM/LD - PDM/ST
PDR/LD - PDR/VTR - PDT/L - PDT/M - PDT/R
PDT/SX - PDT/VTR - PSL/LD - PSL/LX - PSR/LD
PSR/ST - PST/L - PST/R



FIMAR CO4415

3355310 HEATING ELEMENT 1000W 230V TOP

length 185 mm - width 320 mm
complete with cables

for Panini grill electric (BERTO'S) PDT/VTR
PM+VTR - PML/LD - PML/ST - PMR/ST - PMR/VTR



FIMAR CO4433

3755022 HEATING ELEMENT 1150W 240V BOTTOM

length 190 mm - width 310 mm
for Panini grill (SIRMAN) CORT - ELIO

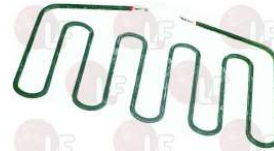


FIMAR CO1060

3355311 HEATING ELEMENT 1500W 230V BOTTOM

length 185 mm - width 320 mm
complete with cables

for Panini grill electric (BERTO'S) PM+VTR
PML/LD - PML/ST - PMR/LD - PMR/ST - PMR/VTR
PMT/VTR



FIMAR CO4438

3755406 HEATING ELEMENT 2000W 230V

external \varnothing 300 mm
for CRÊPE PAN 350 mm
for Crêpe pan electric (FB FABBA)
for Crêpe pan electric (FIMAR) CRP - CRP2



FIMAR CO1765

3755534 HEATING ELEMENT 2000W 230V

length 285 mm - width 125 mm
height 170 mm - flange 50x22 mm
for Fryer electric (FIMAR) FT4 - FT44



FIMAR CO1116

3755686 HEATING ELEMENT 2300W 230V

length 300 mm - width 210 mm
total height 85 mm - flange 70x22 mm
for Salamander electric (BERTO'S) SA/E60
SA/E60-E - SA/E68M - SA/E68M-E



FIMAR CO0426

3755407 HEATING ELEMENT 2750W 230V

external \varnothing 360 mm
for CRÊPE PAN 400 mm
for Crêpe pan electric (FB FABBA)
for Crêpe pan electric (FIMAR)



FIMAR



Suitable for:

FIMAR



3755530 HEATING ELEMENT 3000W 230V
length 610 mm - width 310 mm
fittings \varnothing 12 mm
for Salamander electric (FIMAR) SAL600



FIMAR CO1279

3755535 HEATING ELEMENT 3200W 230V
length 275 mm - width 185 mm
height 170 mm - flange 50x22 mm
for Fryer electric (FIMAR) FT6 - FT66 - FT8 - FT88
SF9 - SF99



FIMAR CO1117

FIMAR CO1959

3355308 HEATING ELEMENT 700W 230V TOP
length 185 mm - width 180 mm
complete with cables
for Panini grill electric (BERTO'S) PD/VTR
PDL/LD - PDL/ST - PDL/SX - PDM/LD - PDM/ST
PDR/LD - PDR/ST - PDR/VTR - PSL/LD - PSL/SX
PSM/ST - PSR/LD - PSR/ST



FIMAR CO4410

3755023 HEATING ELEMENT 700W 240V TOP
length 180 mm - width 175 mm
for Panini grill (SIRMAN) CORT - ELIO



FIMAR CO1057

3755024 HEATING ELEMENT 850W 240V BOTTOM
length 180 mm - width 175 mm
with cables
for Panini grill (SIRMAN) CORT - ELIO



FIMAR CO1058

3755021 HEATING ELEMENT 875W 240V TOP
length 190 mm - width 310 mm
for Panini grill (SIRMAN) CORT - ELIO



FIMAR CO1059

3755025 QUARTZ HEATING ELEMENT 500W 230V
length 340 mm - \varnothing 12 mm
for Toaster electric (FIMAR) TOP3 - TOP6



FIMAR CO1085

3755325 QUARTZ PIPE \varnothing 12x255 mm



FIMAR CO2030

Suitable for:

Suitable for:

3455376 TERMINAL FOR HEATING ELEMENT
 external \varnothing 13 mm - for screw \varnothing 4 mm
 overall length 28 mm
 for Salamander electric (ROLLER GRILL) SEF80
 SEM60 - SEM60TQ



FIMAR CO1107

3755333 WIRE HEATING ELEMENT 400W 230V
 length 340 mm



FIMAR CO1020

3755325 QUARTZ PIPE \varnothing 12x255 mm



FIMAR CO2030

Knobs

3241402 BLACK KNOB \varnothing 70 mm
 D shaft hole 6x4.6 mm
 for thermostat. selector switch. timer.
 program switch. energy regulator



FIMAR CO4422

3241357 BLACK KNOB \varnothing 40 mm
 D-shaped hole 6x4.6 mm



FIMAR CO1947

3444187 BLACK KNOB \varnothing 50 mm 50-500°C
 D-shaped pin \varnothing 6x4.6 mm
 for EGO thermostat



FIMAR CO3611

3241401 BLACK KNOB \varnothing 70 mm UNIVERSAL
 D shaft hole 8x6.5 mm



FIMAR CO3134

Lamps

3221052 GLASS FOR OVEN LAMP RECEPTACLE \varnothing 57 mm
 for OVEN-PIZZA OVEN



FIMAR CO1273

3221132 GREEN INDICATOR LAMP 230V
 head \varnothing 13.5 mm - hole \varnothing 10 mm - 120°C
 universal application



FIMAR CO1948



Suitable for:

FIMAR



Suitable for:

3221293 GREEN INDICATOR LIGHT 250V
head \varnothing 20 mm - hole \varnothing 10 mm - 120°C



FIMAR 32W2970

3221643 LAMP RECEPTACLE W/LAMP E14 25W 230V
lamp glass \varnothing 58 mm
mounting hole \varnothing 38 mm
max. temperature 300°C



FIMAR CO3654

3221052 GLASS FOR OVEN LAMP RECEPTACLE \varnothing 57 mm
for OVEN-PIZZA OVEN



FIMAR CO1273

3221350 LAMP RECEPTACLE WITH LAMP E14 15W 230V
lamp glass \varnothing 42 mm
mounting hole \varnothing 38 mm
max temperature 300°C
for Kitchen electric (TECNOEKA) KCV96P-M



FIMAR CO1271

3221025 ORANGE INDICATOR LAMP 230V
hole \varnothing 13 mm - head \varnothing 15 mm - 120°C
universal application



FIMAR CO1108

3221095 ORANGE INDICATOR LAMP 230V
head \varnothing 13.5 mm - hole \varnothing 10 mm - 120°C
universal application



FIMAR CO1039

3221294 ORANGE INDICATOR LIGHT 250V
head \varnothing 20 mm - hole \varnothing 10 mm - 120°C



FIMAR CO1948

3221061 OVEN LAMP E14 25W 230V
max temperature 300°C



FIMAR CO1272

3221960 WHITE INDICATOR LAMP 230V
mounting hole 30x22 mm - 125°C



FIMAR CO1711



Lava rock grids

3185081 CAST IRON GRILL 540x160x15 mm
for Lava rock grill gas (FIMAR) B115 - B50 - B80



FIMAR CO3126

3185082 STAINLESS STEEL GRILL 500x320x20 mm
for Lava rock grill gas (FIMAR) B50 - B80



FIMAR CO2927

3185083 STAINLESS STEEL GRILL 500x480x20 mm
for Lava rock grill gas (FIMAR) B115



FIMAR CO3128

Lever ball valves

3526699 BALL VALVE ø 1/4" MF



FIMAR SL1622

Microswitches

3240407 MECHANICAL MICROSWITCH KIT 16A 250V
3 locking positions
the kit includes 5 levers:
lever 75 mm - lever 27 mm - lever 15 mm
lever 15 mm with wheels - lever 27 mm with wheels
for Fryer electric (FRYMASTER) EPH14 - EPH17 - H14
H17 - H22
for Fryer gas (FRYMASTER) MJCFEC - MJH50 - MJ35
MJ45E



FIMAR CO1424

FIMAR CO1457

3240144 MICROSWITCH S16 16A 250V



FIMAR CO1109

3240406 MICROSWITCH 10A 250V



FIMAR SL0885



Suitable for:

FIMAR

Suitable for:



OR and ORM gaskets

3186143 GASKET OR 04093 EPDM



FIMAR CO1454

Piezo igniters

3001007 PIEZO IGNITER
a \varnothing 22 mm hole is needed for the assembly
2.4 mm \varnothing male faston connector
for Lava rock grill gas (FAGOR)



FIMAR CO3119

3001020 PIEZO IGNITER 10015
18 mm \varnothing mounting hole
2.4 mm \varnothing male faston connector



FIMAR CO3119

Pilot burners and accessories

3020081 OLIVE FOR 6 mm \varnothing PIPE



FIMAR CO3105

3020166 PILOT ASSEMBLY BRACKET 3 POSITIONS
for Lava rock grill gas (FIMAR) B115 - B50 - B80



FIMAR CO3108

3020181 PILOT GAS JET F10x1 \varnothing 0.20 mm



FIMAR CO3151

3020182 PILOT GAS JET F10x1 \varnothing 0.30 mm



FIMAR CO3150

3020161 TWO-FLAME PILOT BURNER
for Lava rock grill gas (FIMAR) B115 - B50 - B80



FIMAR CO3107

3020166 PILOT ASSEMBLY BRACKET 3 POSITIONS
for Lava rock grill gas (FIMAR) B115 - B50 - B80



FIMAR CO3108



Suitable for:

3020181 PILOT GAS JET F10x1 ø 0.20 mm



FIMAR CO3151

3020171 ROUND IGNITION ELECTRODE ø 6/8x44 mm
female connection
overall length 53 mm
for Lava rock grill gas (FIMAR) B115 - B50 - B80



FIMAR CO3106

FIMAR



Suitable for:

3020182 PILOT GAS JET F10x1 ø 0.30 mm



FIMAR CO3150

Pliers for sandwiches und toasts

3317051 GRILL PLIER
length 100 mm
height 180 mm
for Toaster



FIMAR CO1056

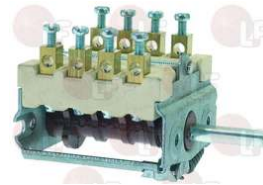
Rotary switches

3057162 SELECTOR SWITCH 0-1 POSITIONS
contact capacity 25A 600V - max 60/75°C
square shaft 5x5 mm



FIMAR CO1043

3057216 SELECTOR SWITCH 0-1 POSITIONS
contact capacity 16A 230V - max 150°C
D-shaped pin 6x4.6 mm
for Panini grill electric (FB FABBA) - Series E
Series S



FIMAR CO1943

3057163 SELECTOR SWITCH 0-4 POSITIONS
contact capacity 16A 600V - max 60/75°C
square shaft 5x5 mm



FIMAR CO1045



Suitable for:

FIMAR



Suitable for:

Solenoid valves

3120004 SOLENOID VALVE 319 220/240V \varnothing 10 mm
solenoid valve 90° - 220/240V 50/60Hz - max 90°C
inlet 3/4" - outlet \varnothing 10 mm



FIMAR 33D1371

Sparking and detection plugs

3020171 ROUND IGNITION ELECTRODE \varnothing 6/8x44 mm
female connection
overall length 53 mm
for Lava rock grill gas (FIMAR) B115 - B50 - B80



FIMAR CO3106

Springs

3250029 LEFTHAND SPRING \varnothing 20x40 mm
for PLATE PS24-36-PD50
for SIRMAN ELECTRIC PLATE PD R/L/M/x since 99
for SIRMAN ELECTRIC PLATE ELIO L/R/X since 99
for SIRMAN ELECTRIC PLATE PD ECO since 99
for SIRMAN ELECTRIC PLATE ELIO ECO since 99
for SIRMAN ELECTRIC PLATE PD POWER since 99



FIMAR CO1055

FIMAR CO1755

3250028 RIGHTHAND SPRING \varnothing 20x40 mm
for PLATE PS24-36-PD50
for SIRMAN ELECTRIC PLATE PD R/L/M/x since 99
for SIRMAN ELECTRIC PLATE ELIO L/R/X since 99
for SIRMAN ELECTRIC PLATE PD ECO since 99
for SIRMAN ELECTRIC PLATE ELIO ECO since 99
for SIRMAN ELECTRIC PLATE PD POWER since 99



FIMAR CO1054

FIMAR CO1754

3250003 SPRING \varnothing 20x115 mm
for ELECTRIC GRIDDLE PS-PM-PD/ST



FIMAR CO4475

Switches

3319012 GREEN BIPOLAR SWITCH 16A 250V
with indicator light and switch cover
screen printing 0 - I
max temperature 120°C
mounting hole 22x30 mm



FIMAR CO1038

3319967 GREEN SINGLE-POLE SWITCH 16A 250V
max temperature 120°C
mounting hole 11x30 mm



FIMAR CO1269

Terminal blocks

3247016 3-POLE TERMINAL BLOCK FV273 40A 450V
for cable max 6 mm²
operating temperature 150°C
nominal voltage 450 V



FIMAR CO4425

Thermocouples and accessories

3440079 THERMOCOUPLE M8x1 60 cm .COUPLING M6x1



FIMAR CO2269

3440032 THERMOCOUPLE SIT M8x1 150 cm



FIMAR CO3110

3440832 THERMOCOUPLE SIT M8x1 150 cm - 10 PCS



FIMAR CO3110

3440832 THERMOCOUPLE SIT M8x1 150 cm - 10 PCS



FIMAR CO3110

3440091 THERMOCOUPLE SIT QUICK M8x1 150 cm



FIMAR CO3161



Suitable for:

FIMAR



Suitable for:

3440082 THERMOCOUPLE SIT QUICK M8x1 60 cm



FIMAR CO3031

Thermostats

3444111 SINGLE-PHASE THERMOSTAT 100-190°C

D-shaped pin \varnothing 6x4.6 mm
covered capillary length 900 mm - 16A 250V
bulb \varnothing 6x130 mm - with adapter nipple bland M9x1
for Fryer (MARENO)



FIMAR CO1111

3444568

SINGLE-PHASE THERMOSTAT 105-185°C

D-shaped pin \varnothing 6x4.6 mm
covered capillary length 900 mm - 16A 230V
bulb \varnothing 6x130 mm - with adapter nipple bland M10x1
for Fryer (MBM) - Series MAGIS MAGISTRA



FIMAR CO1111

3444548 SINGLE-PHASE THERMOSTAT 240°C

with manual reset
capillary length 400 mm
bulb \varnothing 4x90 mm
for Fryer (FIMAR) - Series FT - Series SF



FIMAR CO1110

3444392

SINGLE-PHASE THERMOSTAT 50-300°C

complete with knob
capillary length 900 mm - 23A 400V
bulb \varnothing 4x135 mm
for Panini grill electric (FIMAR) PD50 - PS24
PS36



FIMAR CO1708

FIMAR CO1745

3444543 SINGLE-PHASE THERMOSTAT 50-300°C

D-shaped pin 6x4.6 mm
capillary length 840 mm - 16A 250V
bulb \varnothing 3x185 mm



FIMAR CO1941

3444145

SINGLE-PHASE THERMOSTAT 50-310°C

D-shaped pin \varnothing 6x4.6 mm
capillary length 1600 mm - 16A 250V
bulb \varnothing 4x120 mm
for oven
for Crêpe pan (FIMAR) CRP4 - CRP42
for Crêpe pan electric (FIMAR) CRP - CRP2



FIMAR CO1941



Suitable for:

3444174 SINGLE-PHASE THERMOSTAT 50-320°C

D-shaped pin \varnothing 6x4.6 mm
capillary length 900 mm - 16A 250V
bulb \varnothing 3x220 mm



FIMAR CO1941

FIMAR



Suitable for:

3444336 THERMOSTAT TR2 0-270°C

complete with auxiliary selector switch
D-shaped pin \varnothing 6x4.6 mm
capillary length 940 mm - 15A 250V
bulb \varnothing 3.5x190 mm
for Hot plate electric (ELETTOBAR)
for Hot plate electric (FIMAR)



FIMAR CO4421

Timers

3446100 MECHANICAL TIMER 15 MINUTES

manually set mechanical timer
manually set cycle 15 minutes
max temperature 125°C
D-shaped pin \varnothing 6x4.6 mm



FIMAR

3446051 TIMER 15 MINUTES C20

manually set mechanical timer
manually set cycle 15 minutes
2 poles with contact capacity 16(3)A 250V
max temperature 125°C
D-shaped pin \varnothing 6x4.6 mm
complete with knob
for Toaster electric (CF CENEDESE) T920 - T930
T940 - T960
for Toaster electric (FIMAR) TOP3 - TOP6
for Toaster electric (LOTUS) TS-1



FIMAR CO1012